

NEXT GENERATION ONE FILE NiTi SYSTEM

HyFlex[®] EDM



Unmatched Flexibility
and Fracture Resistance
in a One File System

 COLTENE

HyFlex[®] EDM

Unmatched Flexibility and Fracture Resistance in a One File System

HyFlex EDM offers the dental practitioner enhanced ease of mechanical preparation of the root canal so that even newcomers to endodontics can achieve reliable results quickly and easily.



Extreme Fracture Resistance

HyFlex EDM files are produced using an innovative manufacturing process called Electrical Discharge Machining. The EDM process results in a file that is extremely flexible and fracture resistant. In fact, HyFlex EDM files are up to 700% more resistant to cyclic fatigue compared to traditional NiTi files.*



Controlled Memory

Thanks to controlled memory properties, HyFlex EDM files follow the anatomy of the canal, which can significantly reduce the risk of ledging, transportation and perforation.



Fewer Files Required

The combination of flexibility, fracture resistance and cutting efficiency of the HyFlex EDM make it possible to reduce the number of files required for cleaning while preserving anatomy.

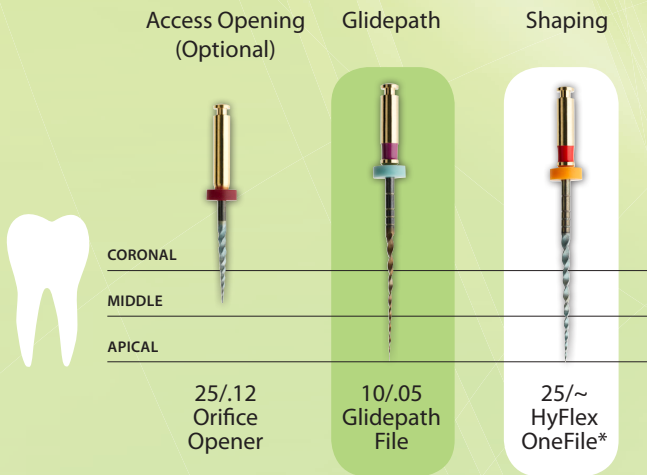


Pre-Sterilized, Modular System

Provided as a modular system of sterile instruments, HyFlex EDM includes Shaping, Glidepath, OneFile, Orifice Opener and Finishing files and may be used in combination with HyFlex CM files.

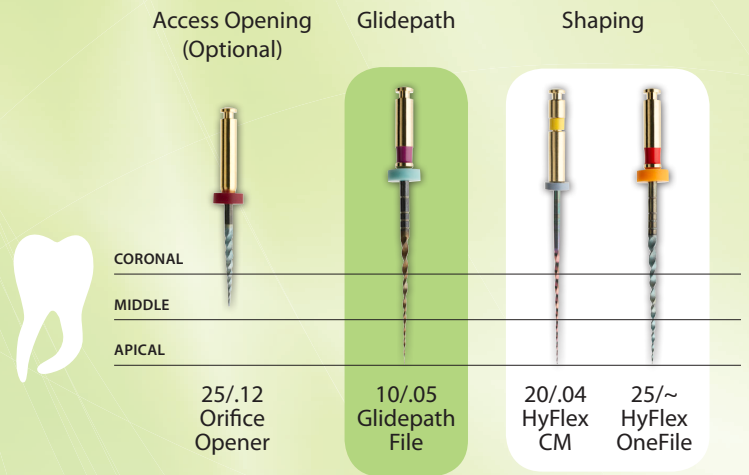
Fewer Files Required for Canal Preparation

HyFlex EDM for Straight Canals



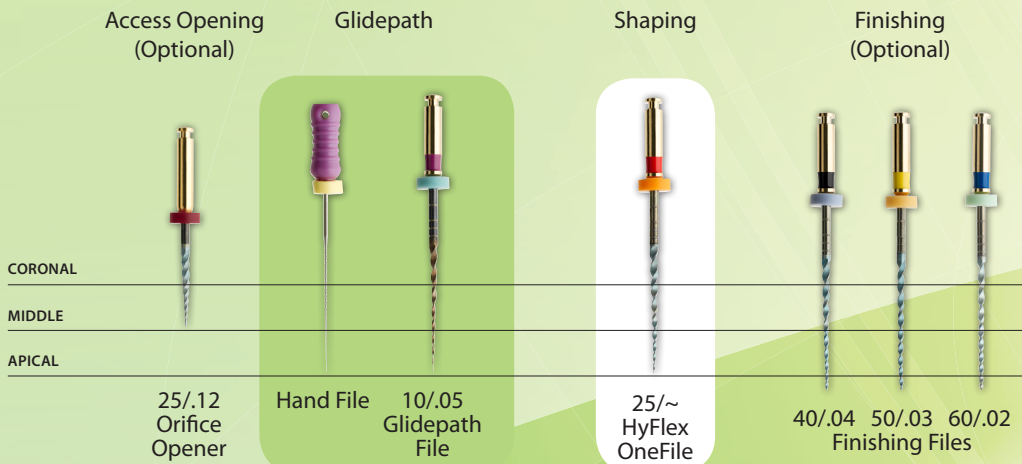
Depending on the clinical situation, use of HyFlex EDM files reduces the number of files required to 2 or 3 instruments, particularly in straight and larger canals.

HyFlex EDM + HyFlex CM for Curved Canals



A combination of HyFlex EDM and CM files is recommended for canals with medium curvature (500 rpm; 2.5 Ncm (25 mNm)).

HyFlex EDM System



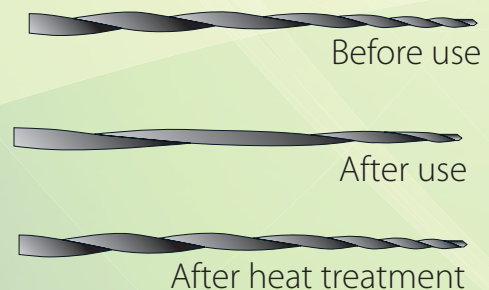
All HyFlex EDM Files can be used at 500 rpm and at a torque of up to 2.5 Ncm (25 mNm) except the Glidepath files, which can be used with 300 rpm and at a torque of up to 1.8 Ncm (18 mNm).

*OneFile (25/~) is constructed with a variable taper

Regeneration by Thermal Treatment

The built-in shape memory of HyFlex EDM files prevents stress during canal preparation by changing their spiral shape. A normal autoclaving process** is enough to return the files to their original shape and fatigue resistance. Should the file fail to regain its shape after heat treatment, risk of fracture is increased, and the file should not be used after visual inspection.

**Follow manufacturer's recommended settings



HyFlex EDM Electric Discharge Machining

- Up to 700% higher fracture resistance*
- Uniquely hardened surface
- Less filing required for treatment success

The HyFlex EDM owes its unique properties to a breakthrough technology called “**Electrical Discharge Machining**”. This innovative manufacturing process uses spark erosion to harden the surface of the NiTi file, resulting in superior fracture resistance and improved cutting efficiency. Just like HyFlex CM files, HyFlex EDM files offer trusted controlled memory effect and regenerative properties.

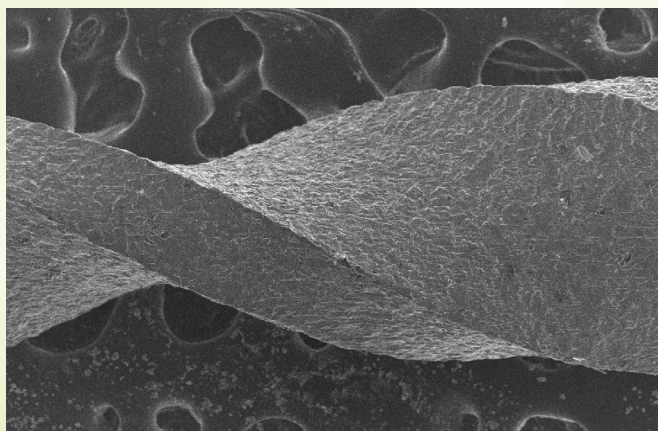
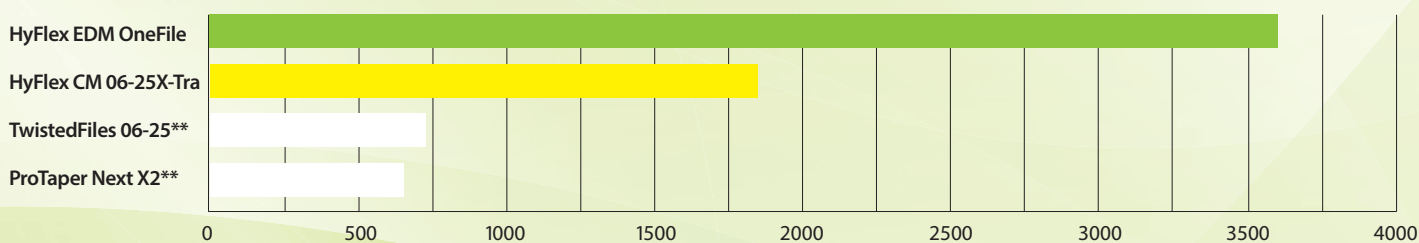


Image courtesy Dr. Chiara Pirani and Dr. Francesco Iacono, University of Bologna

Average value measured at 60° curvature with 9mm radial length

Number of cycles to failure



Source: Internal Tests/ **not a Trademark of COLTENE

Praise for HyFlex EDM Files

“I did a case with 3 EDM files and absolutely loved them! I cut through that curved anatomy like butter...No unwinding noted at all.

— Sam Alborz, DDS, CAGS



“The file remains centered and does not feel like the apical portion is “whipping” or “clicking”...This eases your mind when navigating complex anatomy and dilacerations.

— Marcus Johnson, DDS, MSD

HyFlex EDM OneFile at a Glance

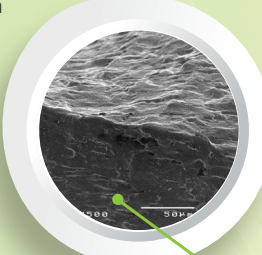


Pre-Sterile



Unmatched Fracture Resistance

Uniquely hardened surface reduces risk of file separation



Variable Cross Section Design

Contributes to high breakage resistance



Almost triangular cross section at top



Cutting Efficiency

Hardened surface plus controlled memory improves cutting efficiency



Extremely Flexible

Controlled memory allows superior canal tracking



Trapezoidal cross section in middle



Quadratic cross section at tip



Visit COLTENE's YouTube channel for more information about the HyFlex EDM and EDM technology.

HyFlex EDM

ORDERING INFORMATION

Rotary Files

Catalog # Description

60019628	HyFlex EDM 10/.05 Glidepath File, 25mm
60019629	HyFlex EDM 25/~ OneFile, 25mm*
60019630	HyFlex EDM 25/.12 Orifice Opener, 15mm
60019631	HyFlex EDM 40/.04 Finishing File, 25mm
60019632	HyFlex EDM 50/.03 Finishing File, 25mm
60019633	HyFlex EDM 60/.02 Finishing File, 25mm
60019641	HyFlex EDM Shaping Set 25/.12; 25/~; 10/05
60019642	HyFlex EDM Finishing Set 40/.04; 50/.03; 60/.02
H8250420	HyFlex CM 20/.04, 25mm

*OneFile (25/~) is constructed with a variable taper



Handpiece

Catalog # Description

H8CPCLINTRO	CanalPro Cordless Handpiece
-------------	-----------------------------

Sealer and Obturation

Catalog # Description

60013709	GuttaFlow2 Automix Standard Set
60019770	GuttaPercha SpectraPoints GT 0.03 #50
60019771	GuttaPercha SpectraPoints OneFile
H08763	GuttaPercha SpectraPoints GT 0.04 #40
H08748	GuttaPercha SpectraPoints 0.02 #60

Irrigation

Catalog # Description

60011157	CanalPro EDTA 480ml
60011159	CanalPro NaOCl EXTRA 480ml
60011160	CanalPro NaOCl 3% 480ml
60011161	CanalPro NaOCl 6% 480ml
60018280	Surgitip-endo Aspirator Tips (20 pack)



© 2016 Coltène/Whaledent Inc.

Coltène/Whaledent Inc.
235 Ascot Parkway
Cuyahoga Falls, OH 44223 / USA
Tel. USA & Canada + 1 800 221 3046
+ 1 330 916 8800
Fax +1 330 916 7077
info.us@coltene.com

Coltène/Whaledent AG 
Feldwiesenstrasse 20
9450 Altstätten / Switzerland
Tel. +41 (0)71 757 53 00
Fax +41 (0)71 757 53 01
info.ch@coltene.com

Coltène/Whaledent GmbH + Co. KG
Raiffeisenstrasse 30
89129 Langenau / Germany 
Tel. +49 (0)7345 805 0
Fax +49 (0)7345 805 201
info.de@coltene.com

 coltene.com
COLTENE